

WIPEOS APPLIANCES



WipeOS 1U Rack Mount Appliance (25Gb Appliance)

High-performance, enterprise-grade appliance designed for maximum speed, scale, and reliability.

- 25Gb network port for ultra-fast imaging and PXE delivery
- Multi-core CPU paired with high-performance NVMe storage
- Enterprise-grade components designed for 24/7 operation
- Advanced cooling for sustained throughput and stability
- Supports large-scale parallel processing and bulk provisioning
- Ideal for ITADs, recyclers, MSPs, and enterprise IT teams
- Includes 10,000 WipeOS credits



WipeOS Standard Appliance

Purpose-built PXE and imaging appliance that enables devices to boot directly into WipeOS for imaging, diagnostics, and data erasure.

- Intel J4125 quad-core processor (4 cores / 4 threads)
- 8GB system memory for reliable multi-device operations
- Dual 2.5Gb Ethernet ports for fast PXE booting and image delivery
- Optimized for network-based boot, wipe, and deployment workflows
- Low-power, stable platform designed for continuous operation
- Supports simultaneous device provisioning and processing
- Ideal for small to mid-sized ITADs, test labs, and automation environments

All hardware is compatible with WipeOS data sanitization software and designed for professional data security operations.

Prices are subject to change. Contact us for volume pricing and custom configurations.

For more information or to place an order, please contact your WipeOS representative.

WIPING SERVERS



SATA/SAS Drive Wiping Server – 12 Slot

- Supports both 3.5" and 2.5" SATA/SAS drives
- Drive slot locations visible in the WipeOS user interface
- Fully compliant with NIST 800-88r1 Clear and Purge standards
- Integrated S.M.A.R.T. monitoring and automated drive grading (A, B, C)



M.2 & U.2 NVMe Drive Wiping Server – 30 Slot

- High-volume sanitization for M.2 NVMe and U.2 2.5" SSDs
- Supports 30 simultaneous drive wipes
- Fully compliant with NIST 800-88r1 Clear and Purge standards
- Integrated S.M.A.R.T. monitoring and automated drive grading (A, B, C)



SATA/SAS Drive Wiping Server – 24 Slot (2.5" Only)

- Designed exclusively for 2.5" SATA/SAS drives
- 24 simultaneous drive slots
- Fully compliant with NIST 800-88r1 Clear and Purge standards
- Integrated S.M.A.R.T. monitoring and automated drive grading (A, B, C)



Half Rack Mobile Enclosure (Optional)

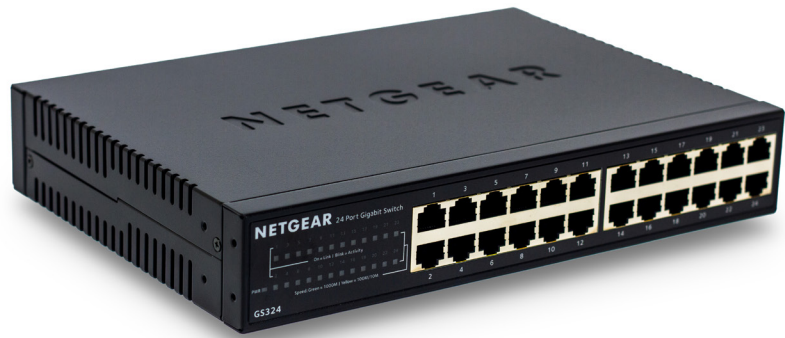
- Professional mobile enclosure for portable or on-site operations
- Half-rack form factor designed for easy transport and deployment

All hardware is compatible with WipeOS data sanitization software and designed for professional data security operations.

Prices are subject to change. Contact us for volume pricing and custom configurations.

For more information or to place an order, please contact your WipeOS representative.

PERIPHERALS



24-Port Gigabit Ethernet Unmanaged Switch

- Plug-and-play gigabit Ethernet switch for network wiping operations
- 24 ports with non-blocking performance
- Fanless design for silent operation
- Durable metal housing; rack, desktop, or wall mountable
- Energy Efficient Ethernet (IEEE 802.3az) support



USB-C to Ethernet Adapter

(Anker 6-in-1 Hub)

- Required for PXE booting on Apple devices and systems without native Ethernet
- Enables network booting via USB bootloader for MacBooks
- Includes Ethernet port, 4K HDMI output, and three USB 3.0 ports



Mini Display

- Compact display for monitoring appliances and operational workflows



Cambrionix industry-grade modular hub and DFU management device

- Automated DFU Preparation
- Reliable Device Detection
- Reduced Manual Effort
- Scalable Mobile Processing

All hardware is compatible with WipeOS data sanitization software and designed for professional data security operations.

Prices are subject to change. Contact us for volume pricing and custom configurations.

For more information or to place an order, please contact your WipeOS representative.